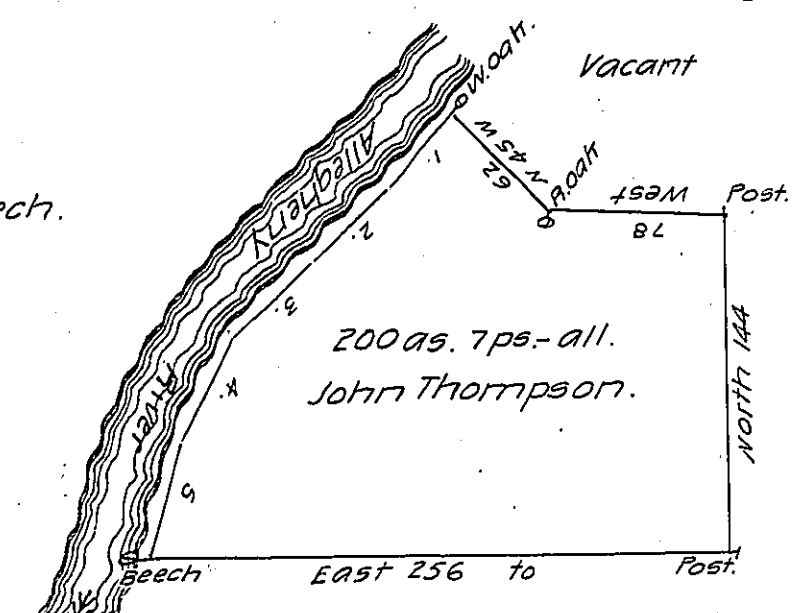


FORM NO 1.

- Courses down the River from a white oak.
1. S. 40. W. 45
  2. S. 46. W. 48.
  3. S. 50. W. 46.
  4. S. 26. W. 50
  5. S. 15. W. 48. to Beech.



C-35-269

Vacant. A-2738

Warrent Surkyd No. 4828:

E-68

Draft of a tract of land situate in Limestone Township Warren County and east of the Allegheny River containing two hundred acres and seven perches of land with the allowance surveyed the 29th day of April A.D. 1830 on Warrent granted to John Thompson dated 29th day of January 1830 adjoining the Allegheny <sup>River</sup> on the west and tract No. 4828 on the south. Vacant land on the north and east

John Andrews D.S.

Jacob Spangler Esqr.  
Surveyor General.

Warren County

IN TESTIMONY that the above is a copy of the original remaining on file in the Department of Internal Affairs of Pennsylvania, made conformably to an Act of Assembly approved the 16th day of February, 1833, I have hereunto set my Hand and caused the Seal of said Department to be affixed at Harrisburg, this twenty-first day of March 1907

*Grace B. Brown*  
Secretary of Internal Affairs.